



design.

Sinch is created with a passion for good design and smart engineering.

What's its secret? Sinch uses the magic of magnets to control your cords and make life a little easier.

wrap.

Wrap and strap to your device.

release.

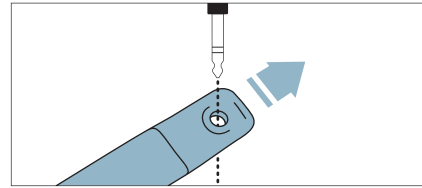
Pull for quick release and easy use.

store.

Remove wrap for handy storage.

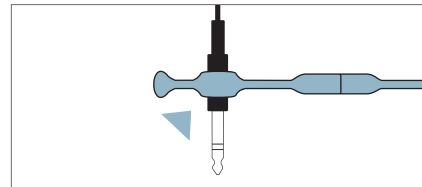
setup.

Insert headphone plug into Sinch



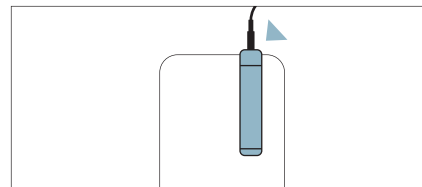
Sinch is flexible. Pull the grip to stretch it open.

Slide Sinch onto plastic housing



Make sure Sinch is attached ABOVE the metal plug.

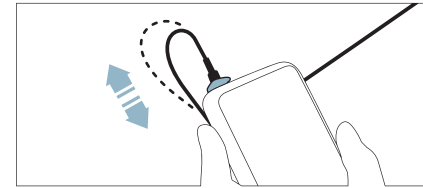
Plug headphone into device



You are now ready to live tangle-free.

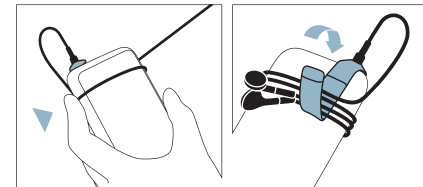
wrap.

Leave a little slack



The amount of slack will control where the microphone and ear buds land.

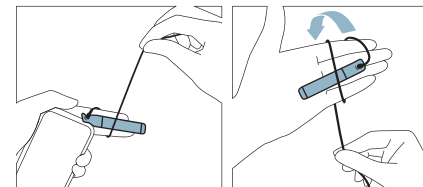
Wrap around device



Hold the cord in place and wrap.

Fold Sinch to secure the wrap.

Try a different wrap

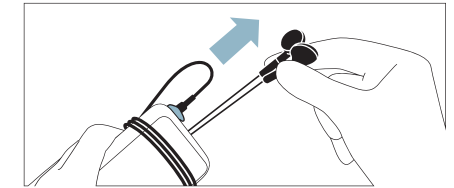


Use two fingers for a small bundle...

or your hand for a larger bundle.

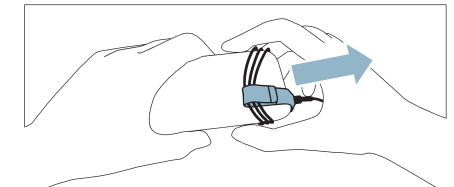
release.

To release headphones



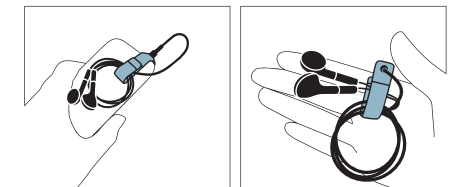
Just pull the ear buds up and away.

To store cord bundle



Slide the bundle off your device to store.

Keep it handy



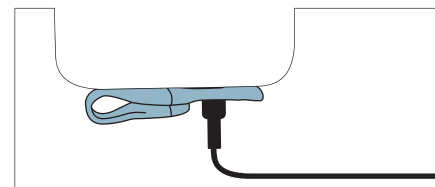
Store it on...

or off your device.

live tangle-free

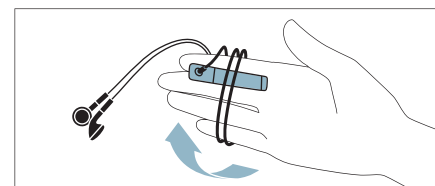
options.

For bottom headphone plugs



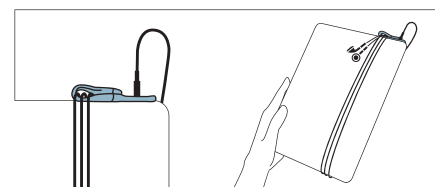
To prevent dangling, position the folded Sinch along the bottom of your device or use the Sinch disc (sold separately).

Hand wrap



Use a hand wrap to store bundled cords without a device.

Try a vertical wrap for tablets



Position Sinch along the top edge of your device.

tips.

Wrapping hint?

The amount of slack will control where the microphone and ear buds land. For wider devices, try less slack and for narrow devices use more slack.

Volume button engaged?

Keep in mind the volume control when you wrap your headphones around your device. If the volume button is activated, just adjust the wrap.

No sound?

Sinch may be obstructing your headphone plug. Make sure it's attached to the plastic housing ABOVE the metal plug.

Loose cord wrap?

To tighten the wrap around your device, tug on the ear buds to create more tension or re-wrap your headphones to minimize the amount of dangling cord.

Want more tips?

Go to www.thesinch.com

patents.

Intellectual property

Invention and design are our passion and mission. We abide and respect all patent and copyright law and expect our competition to do the same.

Dune Road Design actively protects its proprietary designs with U.S. and International Utility Patents, Design Patents, Design Registrations, Trademarks, Shape Marks, Copy Rights and Trade Dress enforcement.

If any product infringes on our patents and trademarks, we will aggressively pursue court orders to stop its sale, and seek substantial monetary damages. We are safeguarded by the best I.P. enforcement around the world.

caution.

Uses rare earth magnets

Sinch contains magnets. Do not swallow. Magnets in the body may cause serious or fatal injury. Seek immediate medical attention if swallowed or inhaled. These magnets may also interfere with pacemakers.

Warning

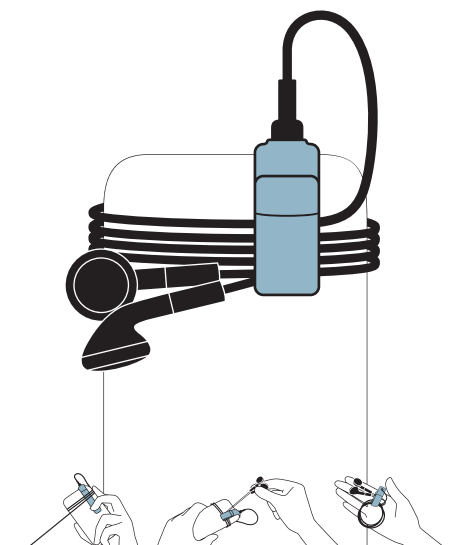
Sinch is a potential choking hazard. Please keep it away from children under three years of age.

Magnetometer

Sinch's magnets will not harm your device. It may disrupt GPS, compass and other functions of the magnetometer. This is normal and your device will simply prompt you to recalibrate your magnetometer with a few gestures.

stop cord chaos.

Keep your headphones safe, snug and tangle-free.



Designed in NYC.
Manufactured in Canada.
www.thesinch.com

© 2011 Dune Road Design, LLC. All Rights Reserved.
Manufactured for and distributed by Dune Road Design, LLC.
US D636.659S and other patents pending.